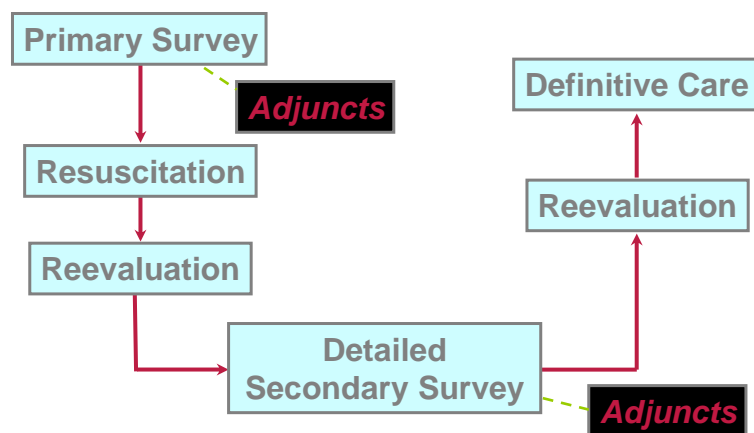
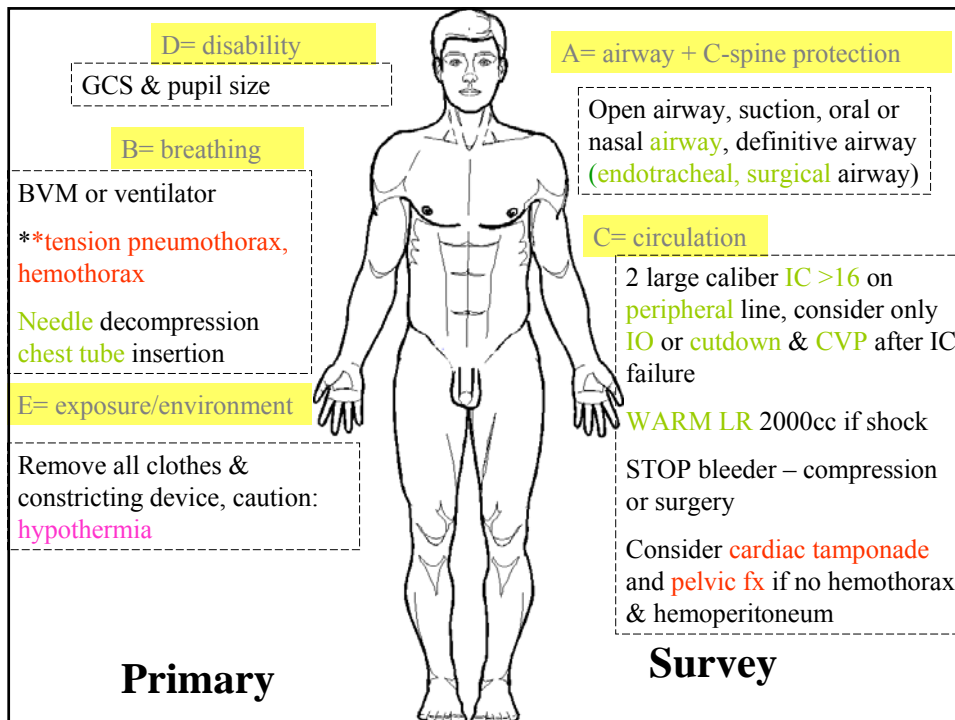


# Initial Assessment at SER and Pitfalls

Division of Trauma and  
Emergency Surgery  
B. L Tan MD

## Concepts of Initial Assessment





## Standard Precautions

- Cap
- Gown
- Gloves
- Mask
- Shoe covers
- Goggles / face shield



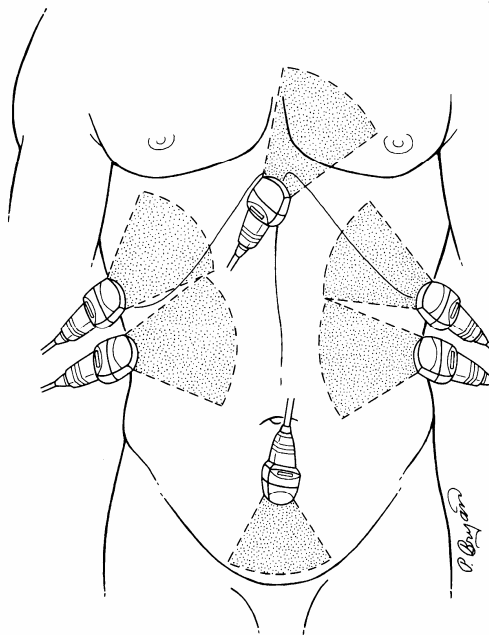
## Airway Pitfalls

- Failure to recognize need of airway
- Failure of intubation
- Equipment failure

## Ventilation Pitfalls

- Failure to recognize ventilation problem
- Iatrogenic issues

Focus  
abdominal  
ultrasound



## Circulation Pitfalls

- Failure to recognize bleeding source
- Dilemma of resuscitation vs balance resuscitation
- Inadequate ER surgical control
- Iatrogenic issues

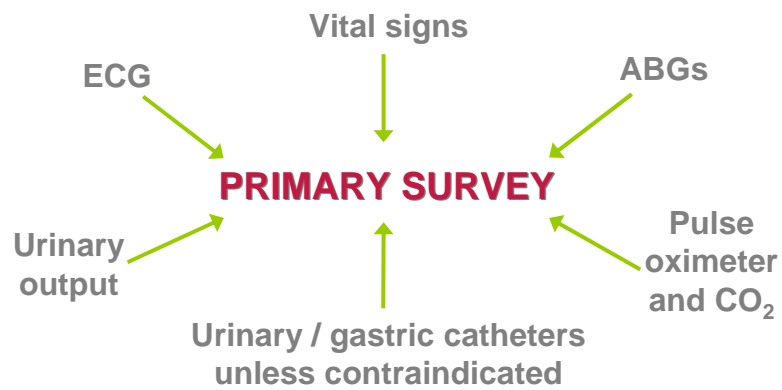
## Disability Pitfalls

- Underestimate A, B problems
- Jumps to conclusion AMS = brain problem
- Underestimate C-spine injury

## Exposure Pitfalls

- Inadequate exposure
- Neglect hypothermia

## Adjuncts to Primary Survey



## Adjuncts Pitfalls

- Failure to recognize indications & contraindications
- Improper placement technique
- Iatrogenic issues